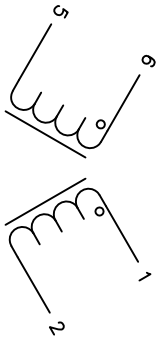


The information contained in this drawing is the sole property of CWS Coil Winding Specialist. Any reproduction in part or whole without written permission of CWS Coil Winding Specialist is prohibited.



SCHEMATIC

- 6 BUILT TO RoHS COMPLIANCE AND LEAD FREE.
- 5 MARK PART NUMBER AND REVISION, DATE CODE IF APPLICABLE.
- 4 EPOXY COIL TO CASE

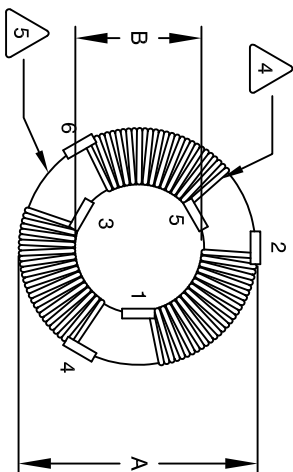
- WEIGHT = 990 GRAMS
- OPERATING TEMP RANGE = -25 °C TO 120°C
- MAX TEMP RISE = 40 °C WITH APPROPRIATE AIRFLOW
- VOLTAGE RATING = 2000 VOLTS RMS.
- DCR ON EACH WINDING = 1.25 mΩ MAX.
- IMPEDANCE = 2.6 kΩ TYP @ SRF.
- MAX VOLTAGE ACROSS EACH COIL (1-2, 4-3, 6-4) = 500 VAC OR VDC
- RATED CURRENT = 100 AMPS
- LEAKAGE INDUCTANCE = 7.5 uH TYP @ 1 KHz, 1 Vrms.
- INTERWINDING CAPACITANCE = 11.5 pF TYP @ SRF.
- SRF = 1.35 MHz
- L = 6 mH TYP @ 1 KHz, 1 Vrms, 0 ADC
- INSULATION RESISTANCE = 100 MEGA-OHMS MIN. @ 500 VDC
- SPECIFICATIONS AT 25°C:

- WIRE: UL RECOGNIZED 200°C RATED MAGNET WIRE
- CWS BYTEMARK OR OTHER APPROVED PART
- CORE: NANOCRYSTALLINE OR AMORPHOUS CORE
- BOBBIN RATING CLASS B (200°) REQUIRED
- 1 MATERIAL: UL RECOGNIZED 94V-0 FOR FLAMMABILITY

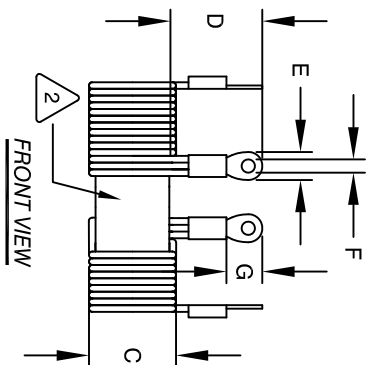
NOTES: UNLESS OTHERWISE SPECIFIED, READ NOTES FROM BOTTOM TO TOP.

DIMENSIONAL TOLERANCES INCHES [MM]

A	B	C	D	E	F	G
MAX	MAX	MAX	REF	REF	REF	REF
4.13 [105.00]	1.97 [50.00]	1.42 [36.00]	2.50 [63.50]	0.060/0.025 [1.52/1.58]	0.268 [6.80]	0.75 [19.05]



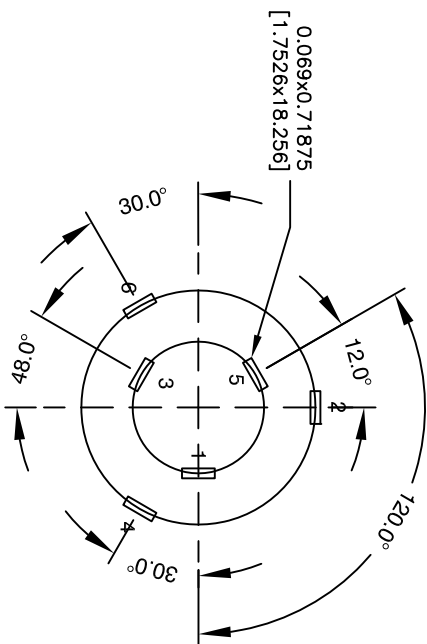
TOP VIEW (TERMINALS UPWARD)



FRONT VIEW

REVISION HISTORY

REV	ECN	DESCRIPTION	BY	DATE	CHK	DATE
A		PRODUCTION RELEASE	JL	07/20/17	AM	07/20/17



MOUNTING (TERMINALS UPWARD)

CODE	IDENT	MFG. P/N	DESCRIPTION	ITEM NO.
PARTS LIST				
AUTOCAD	X			
SOLIDWORKS				
SIGN	DATE			
DRWN JL	07/20/17			
CHKD AM	07/20/17			
ENGR. KLC	07/20/17			
APPR. KLC	07/20/17			
DO NOT SCALE DRAWING				
UNLESS OTHERWISE SPECIFIED				
DIMENSIONING AND TOLERANCE PER ANSI Y14.5M				
ALL DIMENSIONS ARE IN INCHES AND [MILLIMETERS]				
TOLERANCE INCHES:				
.XXX=±.005 .XX=±.015 .X=±.030				
TOLERANCE METRICS:				
.XXX=±.127 .XX=±.38 .X=±.076				
ANGLE PROJECTION				
DO NOT SCALE DRAWING				
TITLE: Nanocrystalline Inductor Common Mode Chokes Horizontal Mount				
CWS COM, INC 353 W Grove Ave Orange, CA 92865				
CWS-1TPC-12710				
REV A				